

INSTRUMENT
APPROACH
CHART

AERODROME ELEV. 3001ft.
HEIGHTS RELATED TO
THR RWY 09 ELEV.3000ft

APP. 121.25
127.75
TWR. 124.35
TAR 119.45

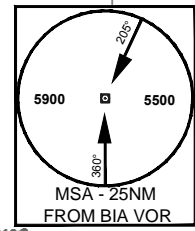
BANGALURU INT.
INDIA
ILS (Z) RWY 09

77°30'E 77°40' 77°50' 78°00'

COORDS OF RADIO NAV AID WGS-84
BEARING ARE MAGNETIC
ALTITUDES, ELEVATIONS
AND HEIGHTS IN FEET.

Acraft with RNAV
capcibility may be
cleared directly to
BEBAM holding
under radar
environment

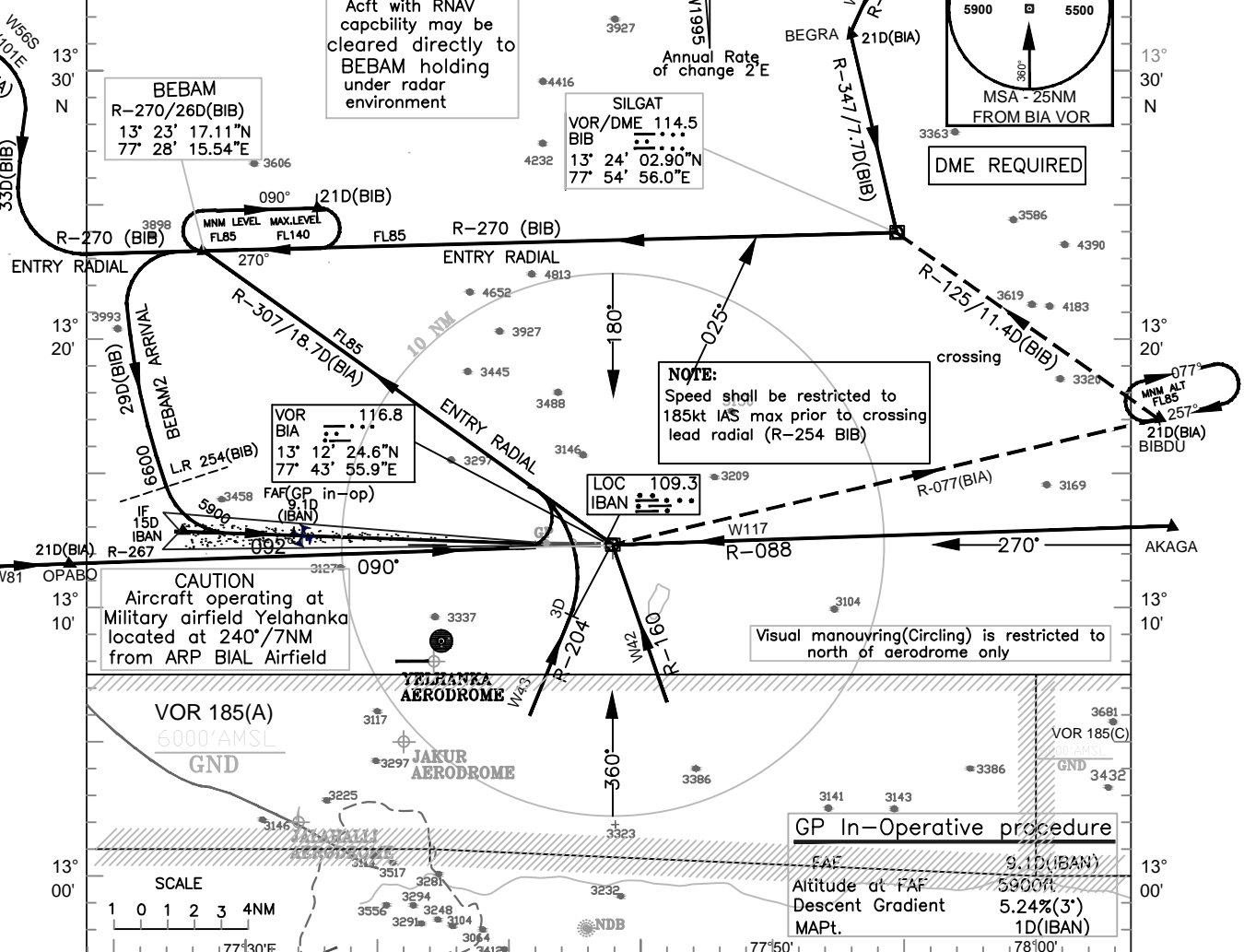
VAR 200W/1995
Annual Rate
of change 2'E



DME REQUIRED

SILGAT
VOR/DME 114.5
BIB
13° 24' 02.90"N
77° 54' 56.0"E

BEBAM
R-270/26D(BIB)
13° 23' 17.11"N
77° 28' 15.54"E



NOTE:
Speed shall be restricted to
185kt IAS max prior to crossing
lead radial (R-254 BIB)

CAUTION
Aircraft operating at
Military airfield Yelahanka
located at 240°/7NM
from ARP BIAL Airfield

Visual manoeuvring(Circling) is restricted to
north of aerodrome only

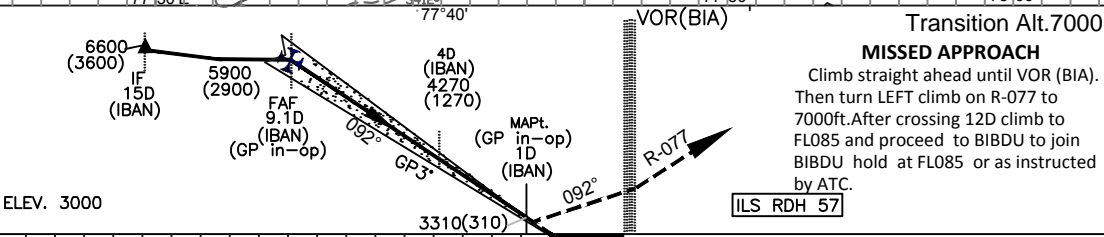
VOR 185(A)
6000'AMSL
GND

YELAHANKA
AERODROME
JAKUR
AERODROME

GP In-Operative procedure

FAF 9.1D (IBAN)
Altitude at FAF 5900ft
Descent Gradient 5.24%(3°)
MAPt. 1D (IBAN)

SCALE
1 0 1 2 3 4NM



Transition Alt.7000
MISSED APPROACH
Climb straight ahead until VOR (BIA) ,
Then turn LEFT climb on R-077 to
7000ft. After crossing 12D climb to
FL085 and proceed to BIBDU to join
BIBDU hold at FL085 or as instructed
by ATC.
ILS RDH 57

		Nautical miles from THR RWY 09										
		O C A (H)										
CATEGORY OF AIRCRAFT	A/B	C/D		Distance (IBAN)/Altitude information								
STRAIGHT-IN	3205(205)	3205(205)		Distance(NM)	9.1D	8D	7D	6D	5D	4D	3D	2D
CIRCLING	3620(619)	3870(869)		Altitude (ft.)	5900	5540	5220	4900	4580	4270	3950	3630
GP in-op Procedure:				Rate of Descent /Ground speed information								
STRAIGHT-IN	3620(620)	3620(620)		Ground speed (kt.)	80	100	120	140	160	180		
CIRCLING	3620(619)	3870(869)		Rate of descent (ft/min)	425	530	635	745	850	955		
DRG. NO. AAI/18-IALC/ 08/01-05-2016												